



The Leading AP Approval and Processing Software for Sage CRE

TimberScan, by Core Associates, automates every aspect of the accounts payable process, including data entry, approvals, and reporting. It eliminates manual-processing risks, and ends the relentless paper-chase that hampers timely invoice approval.

Easy to use and quick to implement, TimberScan was developed for seamless integration with Sage CRE software. Data flows directly from Sage to TimberScan with similar entry protocols; data entry has the same lookups, warnings, error messages, and distribution grids to give you a succinct yet paperless experience.

TimberScan can be configured to support multiple approval levels and user-defined dollar thresholds. By automatically routing invoices to the correct approvers who can bypass, reject, or place a hold on invoices, the AP approval process is simplified and the cycle is shortened.

TimberScan
is the most
sophisticated
solution for easily
and automatically
routing invoices
to the appropriate
approver based on
your business rules—
TimberScan not only
eliminates the paper
trail but alleviates
AP burdens.



Boasting an exceptional reporting engine, TimberScan can significantly improve your company's efficiency, productivity, and, ultimately, your bottom line. Reports can be run from TimberScan that show all costs associated with a job or company, including



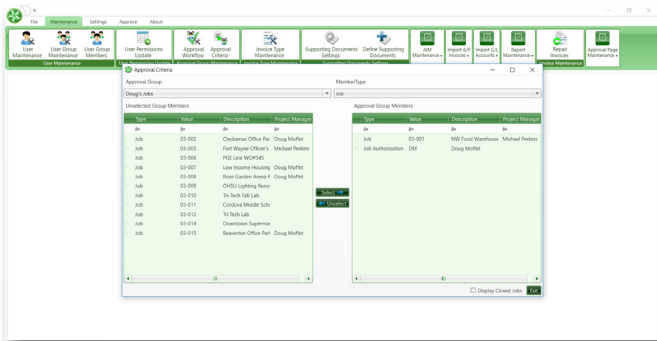
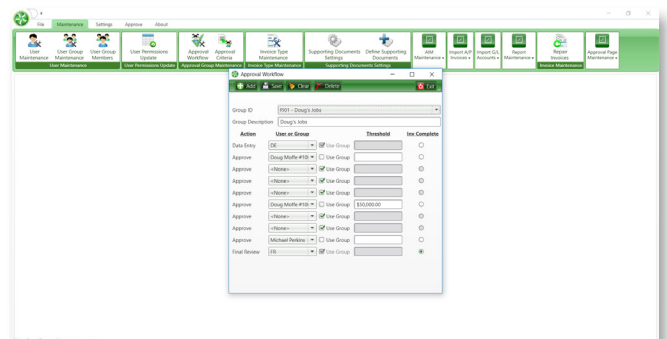
those still in the approval process, or already posted to Sage 300 CRE. TimberScan also provides the visibility to see who is holding onto specific invoices, and for how long. Data mining and analysis is made easy with **flexible reporting** and a customizable dashboard.

Acquiring invoices and documentation is simple with TimberScan. The intuitive **Email Monitoring feature** extracts attachments sent to designated inboxes and saves them to your TimberScan database, automatically. Use drag and drop or scanning to acquire supporting documents, too.



Implementation is quick and easy, with most clients up and running in just a few days. TimberScan **seamlessly integrates with Sage 300 CRE**; invoices coded and approved in TimberScan automatically flow into Sage 300 CRE.

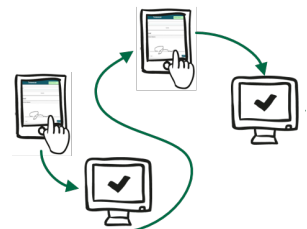
TimberScan has a modern interface that is user friendly and quick to navigate. Having the same lookups, warnings, error messages, and distribution grids, **TimberScan data entry mirrors that of Sage 300 CRE to provide a paper-free experience.** Use AIM (the Advanced Image Management feature) for comprehensive content management to index, search, categorize, route, and retrieve documents of any type from all departments— not just those related to accounts payable— within TimberScan.



Automatic **routing rules** in TimberScan are easily defined and modified, allowing every action and invoice to be tracked with a detailed audit trail for users in the workflow process. Powerful user-level security maintains confidentiality and data integrity.

By eliminating labor-intensive tasks and automating workflows, most TimberScan clients experience a **payback of less than six months**, along with an accelerated accounts-payable

approval process of 50% or more. TimberScan also saves money on paper, toner, storage, express mail fees, and other costs traditionally associated with accounts payable processing. Ideal for companies of all sizes, TimberScan is scalable and can meet a wide range of budget and workflow requirements.



Technical Requirements

Processor Type and Processor Speed:

Type

- x64 Processor: AMD Opteron, AMD Athlon 64, Intel Xeon with Intel EM64T support, Intel Pentium IV with EM64T support
- x86 Processor: Pentium III-compatible processor or faster

Speed

- x86 Processor: 1.0 GHz minimum
- x64 Processor: 1.4 GHz minimum
- (Recommended: 2.0 GHz or faster for optimum performance)

Computer Memory:

- Minimum 512 MB for SQL Express editions (1 GB recommended)
- Minimum 1 GB all other editions (at least 4 GB recommended; should be increased as database size increases to ensure optimal performance).

Note. Running TimberScan with less memory than listed above could affect overall performance.

Disk Space (32 bit and 64 bit):

- Available Hard Disk space on Server: During the installation of TimberScan the following is required: at least 10GB (250GB 2.5" PCIe SSD, SAS SSD, SATA SSD, SAS (15K, 10K), nearline SAS (7.2K), SATA (7.2K), SAS 512e (15K) recommended)

Operating System Requirements:

- Windows Server 2012 R2 Datacenter 64-bit
- Windows Server 2012 R2 Standard 64-bit
- Windows Server 2012 Datacenter 64-bit
- Windows Server 2012 Standard 64-bit
- Windows Server 2008 R2 SP1 Datacenter 64-bit
- Windows Server 2008 R2 SP1 Enterprise 64-bit
- Windows Server 2008 R2 SP1 Standard 64-bit
- Windows Server 2008 SP2 Datacenter 64-bit
- Windows Server 2008 SP2 Enterprise 64-bit
- Windows Server 2008 SP2 Standard 64-bit
- Windows Server 2008 SP2 Datacenter 32-bit
- Windows Server 2008 SP2 Enterprise 32-bit
- Windows Server 2008 SP2 32-bit Standard

TimberScan is supported in either a Windows Terminal Server or Citrix environment. Running TimberScan in a VPN environment is not supported.

TimberScan will run on a Peer-to-Peer network provided the 'host' computer is not using Windows 8.

Running TimberScan on computers connected wirelessly to the TimberScan server is not supported.

* TimberScan stores its data in a Microsoft SQL database. Core Associates will install Microsoft 2012 SQL Express for companies without a full version of Microsoft SQL. For 20 or more users or where slow performance is an issue, Microsoft recommends upgrading to a full version of SQL Server. No other database software programs (MySQL, etc.) are supported. It is best practice never to have more than 1 instance of SQL Express on any server.

For AIM and workstation requirements, please contact your TimberScan representative. For Sage product requirements, please contact your Sage representative.

